



UL Solutions
7036 Snowdrift Road
Allentown, PA 18106
610-774-1300



Integrating Sphere Test Report

Relevant Standards
IES LM-79-2019, ANSI C82.77-10-2014, CIE 13.3-1995
CIE 15-2004, ANSI C78.377-2017, IES TM-30-2018

Prepared For
H E Williams Inc

Dean Vandergriff
831 W Fairview Ave
PO Box 837
Carthage
MO 64836-0837

Catalog Number
FT-24-5-8-3500K-AF-DIM-UNC (FT-22-LS-8CS-AF-DIM-UNV)

Order Number
15184934
Test Number
15184934.08

Test Date

2024-02-27

Prepared By

Dennis Kabana, Laboratory Technician

Approved By

Jesse Litchfield, Project Handler

The results contained in this report pertain only to the tested sample.
This report shall not be reproduced, except in full, without written approval of Underwriters Laboratories.
This report must not be used by the client to claim product certification, approval, or endorsement by
NVLAP, NIST, or any agency of the Federal Government.



Luminaire Description: Recessed 2 x 4 Lumen/Wattage selectable, CCT selectable, LED Troffer w/center frosted acrylic lens.
Lamp: 224 LEDs
Mounting: Recessed
Ballast/Driver: ISTAR ISC-045W-105DDSM-ADJ33

Luminaire



Summary of Results

Radiant Flux:	17300 mW
Luminous Flux:	5765 lm
Luminaire Efficacy:	148.0 lm/W
CCT:	3480 K
CRI (Ra):	81.3
Chromaticity (x):	0.4062
Chromaticity (y):	0.3908
Chromaticity (u):	0.2362
Chromaticity (v):	0.3409
Duv:	0.0004

Test Conditions

Test Temperature:	25.3 °C
Voltage:	120.0 VAC
Current:	0.3259 A
Power:	38.94 W
Power Factor:	0.996
Frequency:	60 Hz
Current THD:	5.20 %

Testing was performed in a 3-meter integrating sphere using the 4 π geometry method.
Absorption correction was employed for this measurement.

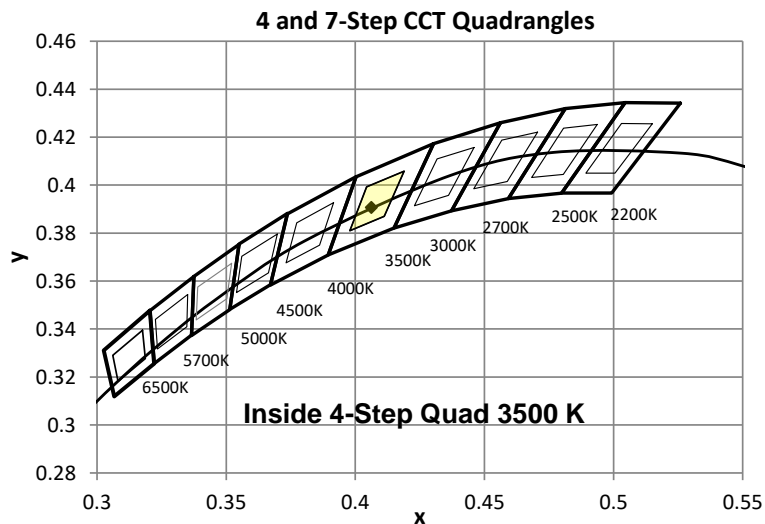
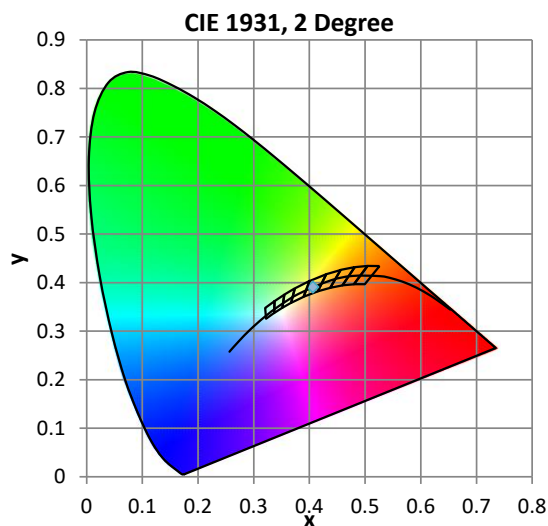
Color Quality - Integrating Sphere

Integrating Sphere Test Conditions

Temperature	Voltage	Current	Power	Power Factor	Frequency	Current THD
25.3 °C	120.0 VAC	0.3259 A	38.94 W	0.996	60 Hz	5.20 %

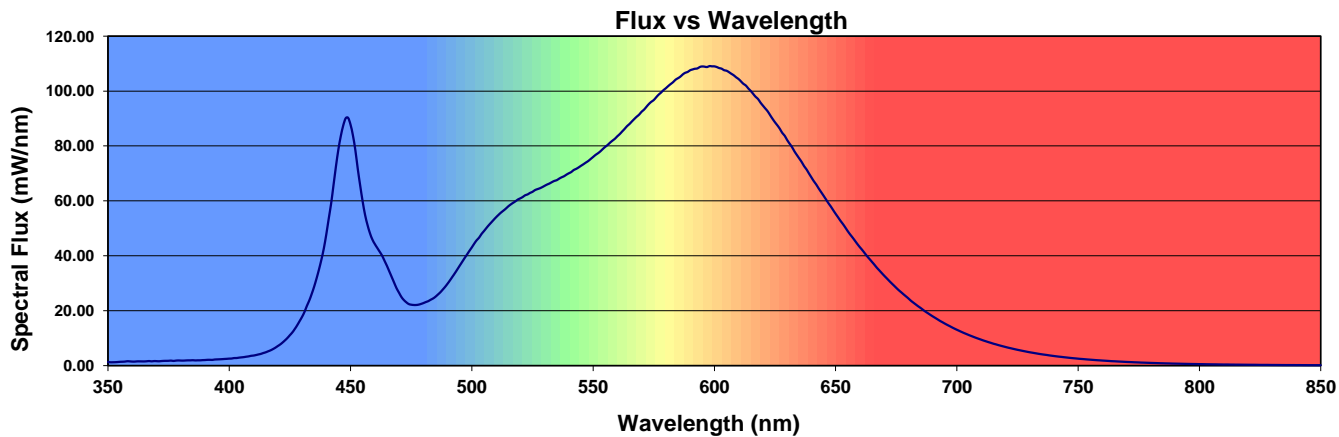
Summary of Results

Total Output:	5765 Lumens	Chromaticity (x):	0.4062
Efficacy:	148.0 lm/w	Chromaticity (y):	0.3908
CCT:	3480 K	Chromaticity (u'):	0.2362
CRI (Ra):	81.3	Chromaticity (v'):	0.5114
CRI (R9):	-1.1	TM-30 Rf:	83
Peak Wavelength:	600 nm	TM-30 Rg:	96
Dominant Wavelength:	555 nm	TM-30 Rcs,h1:	-13%
S/P Ratio:	1.5	Duv:	-0.0002
M/P Ratio:	0.58	WELL Building Standard v2	



Color Rendering Index Detail

Ra (CRI)	R1	R2	R3	R4	R5	R6	R7	R8	R9	R10	R11	R12	R13	R14	R15
81.3	79.2	88.3	95.6	80.3	79.7	84.9	83.4	58.8	-1.1	73.3	79.7	66.8	81.2	97.8	71.7



ANSI/IES TM-30-18 Color Rendition Report

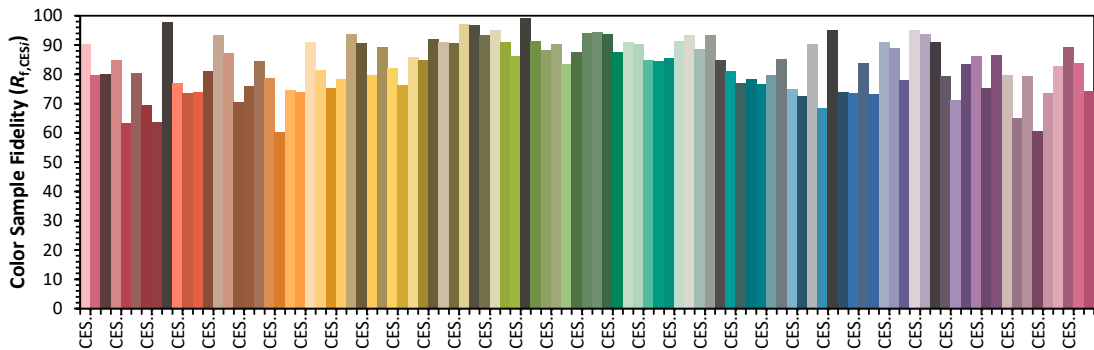
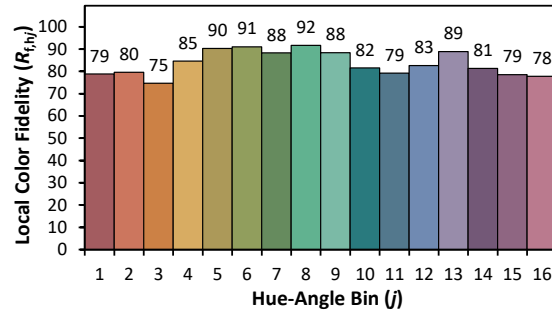
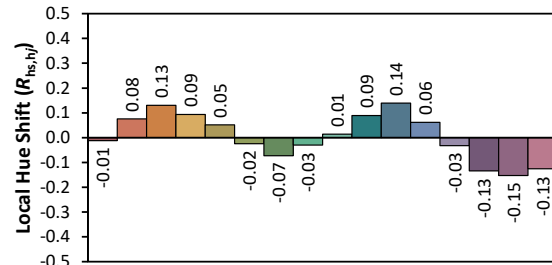
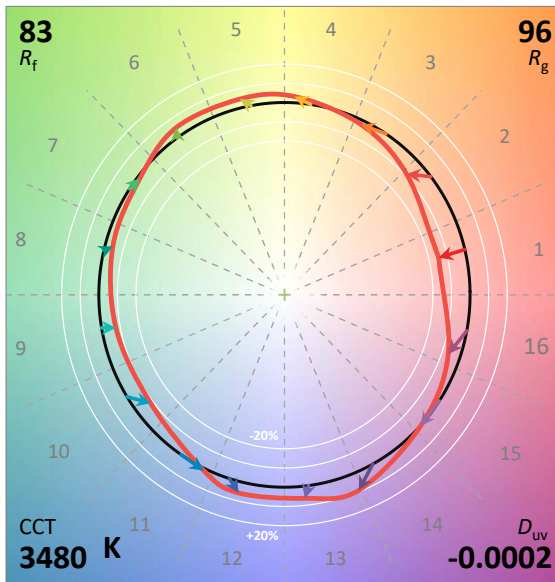
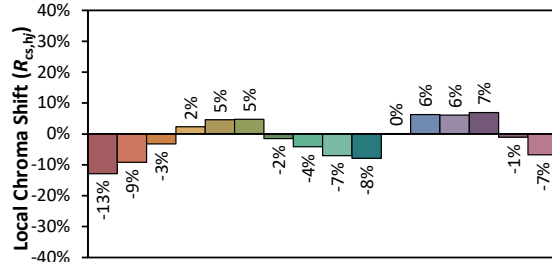
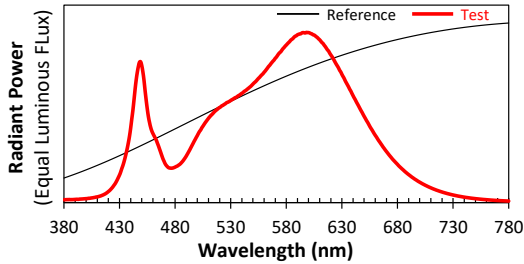
Date: 2024-02-27

Manufacturer:

H E Williams Inc

Model:

FT-24-5-8-3500K-AF-DIM-UNC (FT-22-LS-8CS-AF-DIM-UNV)



Notes: This is a recommended method for displaying ANSI/IES TM-30-18 information.

x 0.4062

y 0.3908

u' 0.2362

v' 0.5114

CIE 13.3-1995
(CRI)

R_a 81

R_g -1

Colors are for visual orientation purposes only. Created with the IES TM-30-18 Calculator Version 2.00.